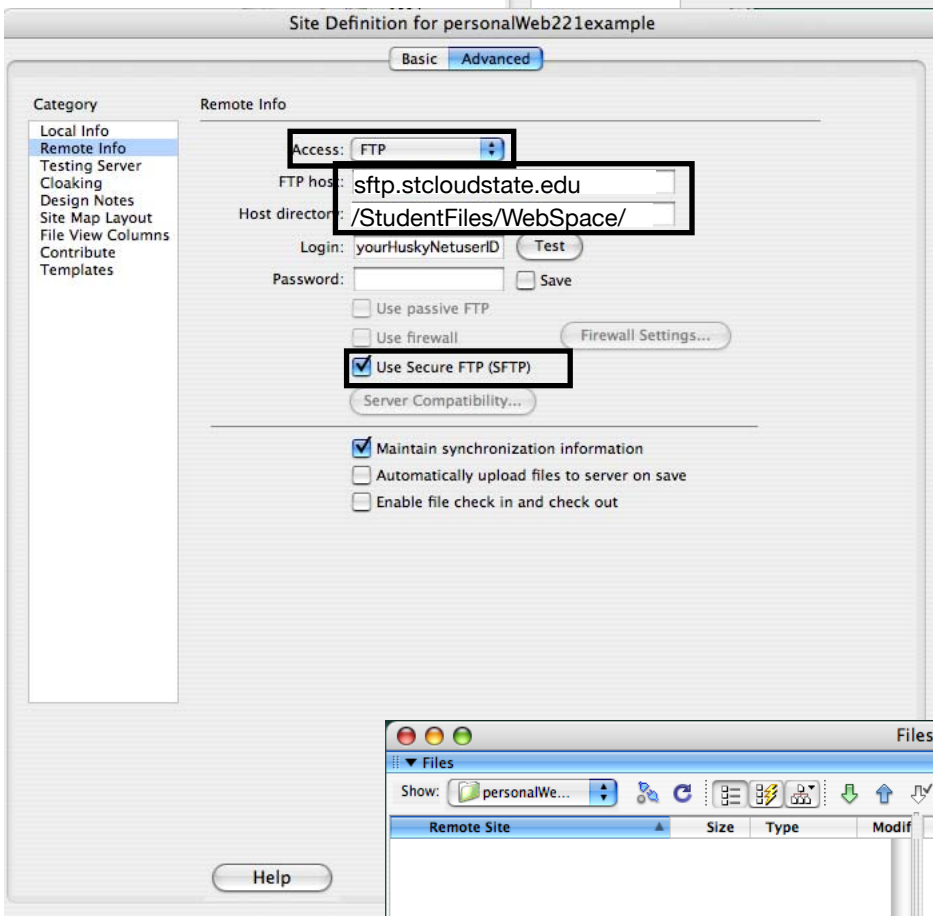
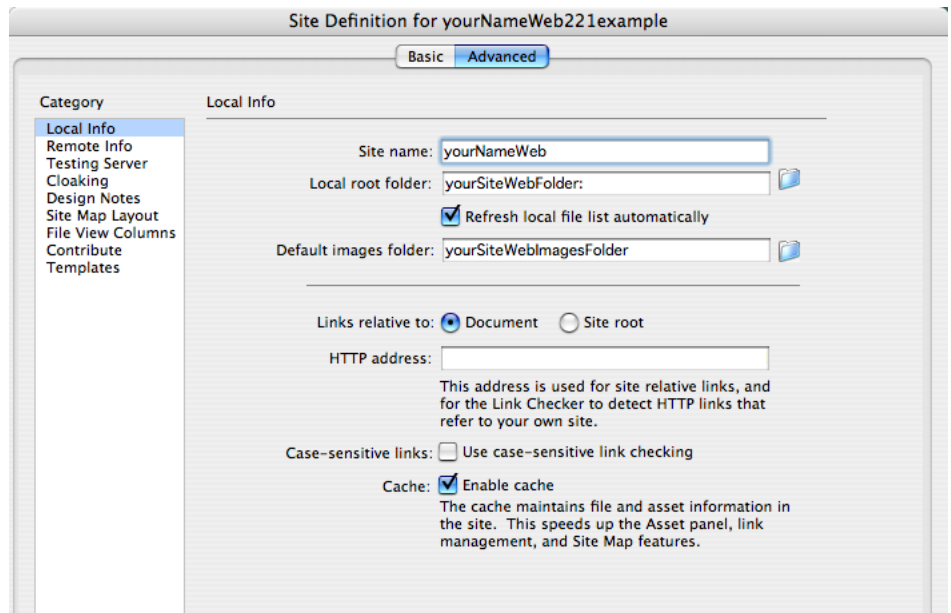
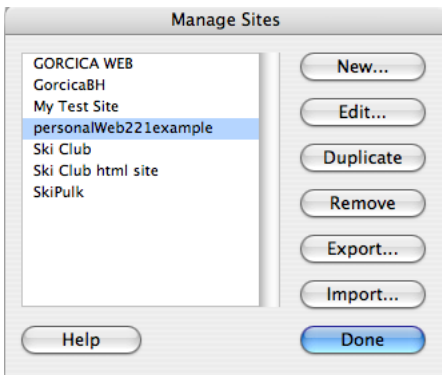


Go to Site Menu and either New Site or Manage Site... then click new or edit in the box below to setup a site using the window below to start.



Enter the information specific to your site in the fields as indicated. Those with the black box around must be entered exactly as is for you to work with your SCSU web account. Boxes are also around the Access Type: Choose FTP, and the radio button, "Use Secure FTP" which must be clicked.

Remember that the first page should be called "index.html" on your site. Leave the password field empty. Don't save it.

Once you set up your site and want to access it, open the Files window and expand it to show both local and remote views by clicking on the far right icon. Click on the far left plug icon to connect. Then drag and drop your site files over the folder icon on the left. Then click the plug again to disconnect.

